

RATES & RESERVATIONS

For rates and to make reservations for your class contact the Education Department at 718-885-1461.

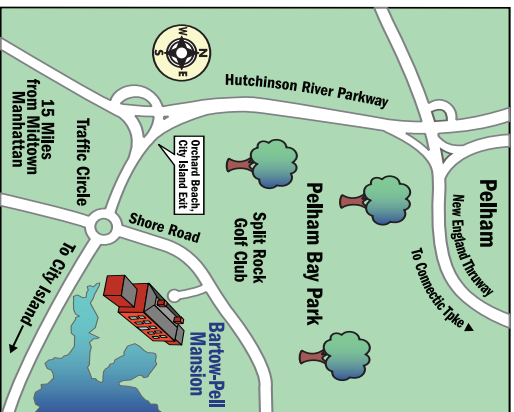
FOR ADDITIONAL INFORMATION

www.bpmm.org

DIRECTIONS TO THE MUSEUM

895 Shore Road, Pelham Bay Park
Bronx, New York, 10464

- ▶ **By Car:** From I-95, merge onto Shore Road. Follow 1.1 miles over the drawbridge and straight to the traffic circle. All exit right into the traffic circle. Continue around circle to Shore Road North. Follow Shore Road North, a quarter of a mile. Enter stone gates on the right. **Free parking is available.**
- ▶ **By Public Transportation:** Take the #6 Lexington RT to Pelham Bay stop (last stop). Then take the #45 Westchester Bee-Line bus to the gates.



EDUCATIONAL PROGRAM SUPPORT

Bartow-Pell Mansion Museum is owned by the New York City Department of Parks & Recreation, operated by Bartow-Pell Conservancy, and is a member of the Historic House Trust.



This program is also sponsored in part by public funds from the New York City Department of Cultural Affairs, and grants from Harmon Foundation and State Assemblyman Michael Benedetto. We wish to thank the Materials for the Arts, Department of Sanitation, and NYC Department of Education for their support.



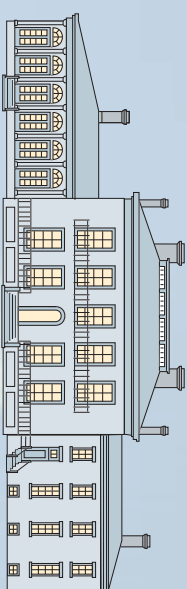
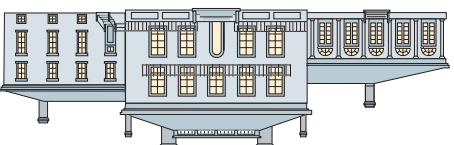
JUNIOR LEAGUE OF PELHAM

Women building better communities



895 Shore Road, Pelham Bay Park
Bronx, New York, 10464

Bartow-Pell Mansion Museum

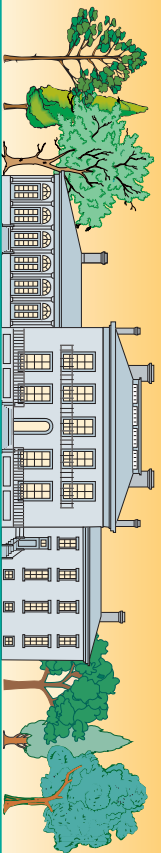


Bartow-Pell Mansion Museum

**MUSEUM
SCHOOL
PROGRAMS**



Non-Profit Org
U.S. Postage
PAID
Permit No. 2121
White Plains, NY



Bartow-Pell Mansion MUSEUM SCHOOL PROGRAMS

Each of our programs complies with New York State Learning Standards in Social Studies, Language Arts, The Arts, Languages other than English, and Science and Technology.

Family Life on a 19th Century Estate

(3rd Grade & up) Approx. 90 minutes



90 minute on site visit of the 1840's mansion and carriage house once owned by Robert Bartow a paper manufacturer and book publisher as well as a farmer. He and his wife Maria Lorillard raised 7 children at the mansion. Students will discover what it was like to live on a country estate as a child of wealthy parents and as a young immigrant member of the Bartow's staff. There is an opportunity to discover artifacts and objects used by families of this time period and find out the answers to these questions: What's a Hygiene corner?; Who emptied the chamber pots?; Why was the dining room painted purple?; Whose job was it to care for the horses and how old was he?



► **State Learning Standards:** English Language Arts Standards 1, 3, 4; Social Studies Standards 1, 2, 3; Mathematics, Science and Technology Standards 5, 7.

19th Century In-School Program

(3rd Grade & up) 1 hour visit in classroom
(Limit 1 class per hour)

Using primary source documents from the Bartow family and the Bartow-Pell archives, students will learn

and discover who lived at the mansion, how it was built, and what were some other occupations of the time period. They will also uncover why many of the servant staff were from Ireland by studying a transcript of the 1860 Federal Census for the Bartow



household. In addition to using primary source materials students will also have the opportunity to handle and explore actual 19th century objects such as an iron, chamber pot, bathtub, child's doll, and more.

► **State Learning Standards:** English Language Arts Standards 1, 3, 4; Social Studies Standards 1, 2; Mathematics, Science and Technology Standards 5.

The Original Bronx Natives ...Who Were They?

(3rd Grade & up) Approx. 90 minutes outside

This hands-on interactive program uses our authentic Woodlands Wigwam where students learn about life as a Lenape Indian. An exploration of Lenape culture includes food prep and storage, story telling traditions, exploring food sources, and walking the grounds to search for animals or animal tracks.



Students also listen and dance to Lenape music and make cording from natural plant fibers.

► **State Learning Standards:** English Language Arts Standards 1, 3, 4; Social Studies Standards 1, 2; Languages Other than English Standards 1, 2;



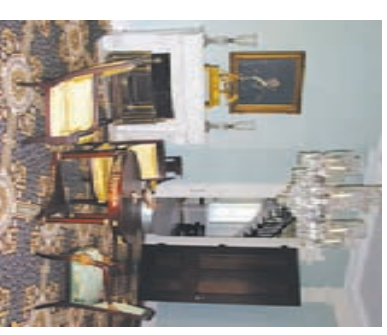
The Arts Standards 1, 4; Mathematics, Science and Technology Standards 4, 5, 7.

Architecture and Design

(7th -12th Grade) Approx. 90 mins.



Explore the Bartow-Pell Mansion Museum and Carriage House from the point of view of an architect. Students will use technical drawings to explore and understand the two main types of Architecture represented at Bartow-Pell, both Federal and Greek Revival Style. Using elements of interior design and furniture construction of the era, students will gain an understanding of the historical and social importance of the decorative arts.



► **State Learning Standards:** Mathematics, Science and Technology 4, 5, 7; Language Arts 1, 2; The Arts 1; Social Studies 1, 2.